



Finally, a Complete Document Capture Solution Designed Exclusively with the Needs of the Line of Business Owner in Mind

Overview: CAPSYS CAPTURE™ for Microsoft SharePoint 2010

The CAPSYS CAPTURE SharePoint 2010 QSX release module copies document images, eDocuments, meta data and other content types from CAPSYS CAPTURE into the Microsoft SharePoint 2010 repository.

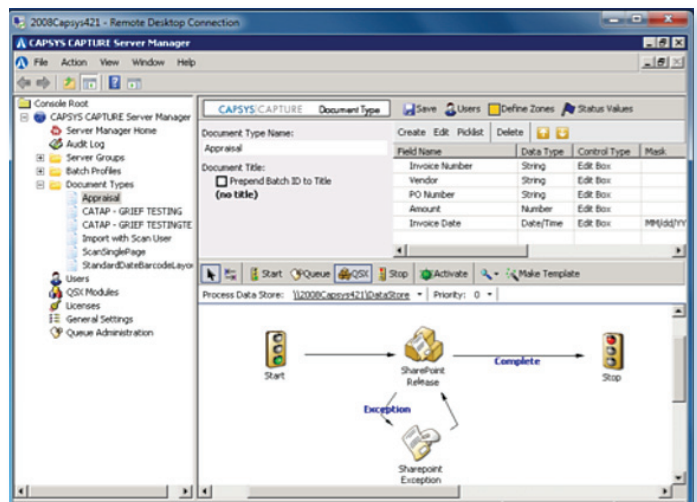
MICROSOFT SHAREPOINT 2010

Microsoft's SharePoint 2010 makes it easier for people to work and collaborate together. Using Microsoft SharePoint 2010, your organization's personnel can set up websites to share information with others, manage documents from start to finish, and publish reports to help everyone make better decisions throughout the entire organization.

CAPSYS® provides the most cost-efficient platform to capture content using distributed or centralized methods using only a web browser. CAPSYS CAPTURE converts the content into structured electronic information, all while adhering to your organization's business processes, compliance and records management policies, validating that content and delivering it to your Microsoft SharePoint 2010 libraries.

CAPSYS CAPTURE QSX Integration with Microsoft SharePoint 2010

CAPSYS CAPTURE captures and delivers various information types into Microsoft's SharePoint ECM repository, enabling organizations to automate document-driven business processes, resulting in a reduction in operational costs, increased productivity and a rapid ROI. CAPSYS CAPTURE's role in the Microsoft SharePoint infrastructure is to manage an enterprise-wide data and document capture process, which begins with scanning in paper-based documents or importing faxes, emails, attachments and other forms of electronic documents. CAPSYS CAPTURE uses a unique business process engine complete with a visual (graphical) workflow designer and flexible processing queues to allow people to work together across the world, streamlining mission-critical business processes such as Admissions, Accounts Payable, Human Resources, and many others. And, CAPSYS does it in the most accurate, timely and cost-effective manner.

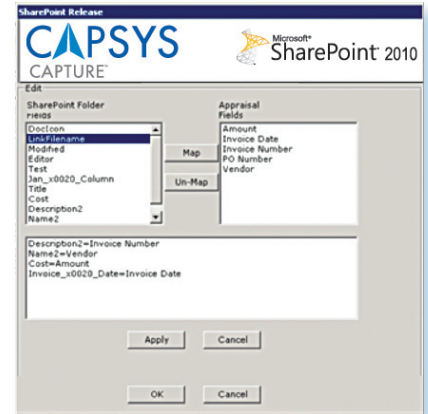


CONFIGURATION AND DEPLOYMENT WITHOUT PROGRAMMING!

CAPSYS CAPTURE Quick Server Extension (QSX) for SharePoint 2010 works similarly to any other CAPSYS QSX. CAPSYS administrators select the QSX from their library of QSX extensions, drop the icon into their document process map and configure the various attributes of their SharePoint library environment.

CAPSYS administrators have the ability to easily configure and map fields and field types from various SharePoint libraries to CAPSYS process maps. The mapping process ensures the proper metadata/indexing information is being carried over from the CAPSYS data and document capture system to the Microsoft SharePoint 2010 Enterprise Content Management libraries.

To provide organizations with the greatest degree of flexibility, CAPSYS supports the creation of dynamic document libraries, indexes and outputs content in a variety of SharePoint-supported formats such as PDF, TIFF, JPEG and more.



SHAREPOINT QSX CONFIGURATION OPTIONS

Label	Description
▲ Document Type	When running the SharePoint release at the batch level, an administrator will have the option to configure the SharePoint release for each CAPSYS document type in the batch.
▲ SharePoint Library	List of available SharePoint libraries
▲ SharePoint Folder	SharePoint folders in the SharePoint document repository can be created dynamically based on CAPSYS index values or documents can be released to static folders in the repository.
▲ Document Name	Internal filename, which can be dynamically created from CAPSYS index values, used by SharePoint Libraries
▲ SharePoint Server URL	URL for SharePoint Instance that CAPSYS CAPTURE QSX will be targeting
▲ Username	SharePoint username that has authorization to SharePoint server farm and libraries
▲ Password	SharePoint password that has authorization to SharePoint server farm and libraries
▲ SharePoint Folders Fields (<i>left side of setup screen</i>)	List of SharePoint fields that are available to map CAPSYS document fields
▲ CAPSYS <application name> Fields	List of CAPSYS document fields that are to map SharePoint fields

For an online demonstration, visit: www.youtube.com/capsystech



COLORADO HEADQUARTERS
6755 EARL DRIVE, SUITE 207 | COLORADO SPRINGS, CO 80918
MAIN: 877-322-7797 | FAX: 630-875-1101
WWW.CAPSYSTECH.COM



ABOUT CAPSYS

CAPSYS™ is a leading provider of document and data capture software solutions designed to streamline the process of acquiring documents and information securely and efficiently. CAPSYS provides its affordable, easy-to-deploy, web-based document capture solutions via a thin client application requiring no client software to be installed, upgraded or maintained. The company's flagship product, CAPSYS CAPTURE Software, can easily and efficiently capture documents for organizations of any size, from anywhere, at any time, in both centralized and distributed document capture environments. CAPSYS' solutions are offered both as a Software as a Service ("SaaS"), hosted in the convenience of our secure data center, as a traditional "on-premise" license purchase or as an easy-to-deploy, pre-configured network appliance. To learn more, call 877-322-7797 or visit www.capsystech.com.